



Rolling High-Speed Door

PR10

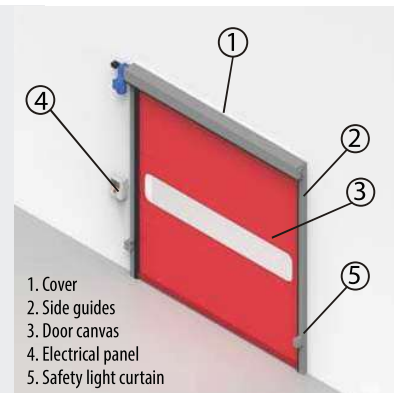
Motorised high-speed rolling door with a metallic structure for installation in indoor areas.

TECHNICAL DESCRIPTION

Inkema's PR10 Rolling High-speed Door is composed by a PVC canvas with internal reinforcements, attached to a **metallic frame** which incorporates a motor-reducer driven by a control panel.

It has been designed for use in warehouses, logistics centres, premises and any type of production plant which processes a lot of goods.

This fast-acting door is designed especially for heavy duty indoor applications. It facilitates a fluid traffic thanks to its high speed of opening and closing. As a result, it also **saves energy and improves efficiency**.



1. Cover
2. Side guides
3. Door canvas
4. Electrical panel
5. Safety light curtain

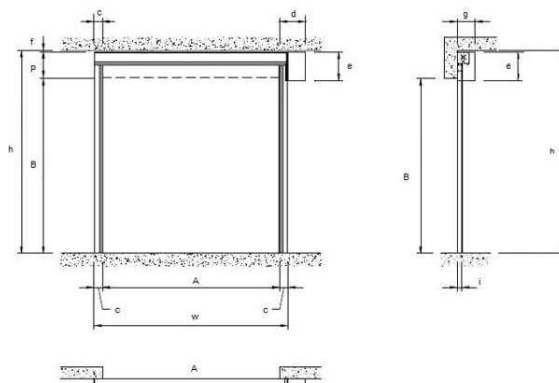
- ✓ **EXCELLENT TIGHTNESS:**
It blocks wind currents with the double brush on the frame structure.
- ✓ **DOOR FOR MULTIFUNCTIONAL USE:**
Suitable for installations in any industrial sector: logistics, automobile, agricultural foodstuff, pharmaceuticals...
- ✓ **MAXIMUM SAFETY ABOVE ALL:**
The PR10 includes a safety light curtain with a polarised filter as standard.
- ✓ **FAST ASSEMBLY AND EASY REPAIR:**
The door comes pre-installed. Low maintenance.



TECHNICAL DATA

- Application: Indoor
- Structure: Metallic frame
- Max. size: 4000 x 4000 mm.
- Colours (canvas-frame) 10 colours available (white, cream, yellow, orange, red, light blue, dark blue, green, grey and black).
- Material-canvas: High strength PVC (900g/m²)
- Max. Speed: Opening: (~1,0m/s)
Closing: (~1,0m/s)
- Safety: Light curtain (standard)
Soft, flexible lower edge
- Compliance: EN13241-1

DIMENSIONS



	A	B	P	c	d	e	f	g	h min	i	w min
Min. (mm)	820	2000	450	115	455	527	30	328	2580	80	1050
Max. (mm)	4000	4000							4480		4230

(*)Valid dimensions for doors with right side engine 10PR10/11ABLDA

COMPOSITION

This **high-speed rolling door** consists of the following elements:

- **CANVAS:** Made with flexible polyester inner mesh of great resistance and covered with PVC in 0.8 mm thickness. Transversal reinforcements are placed to provided greater rigidity. PVC. Reinforcements are inserted across the canvas to provide greater rigidity.
- **FRAME:** Composed by two laterals and head, all made in 2mm folded sheet.
- **HEAD:** It contains the pivot shaft designed to withstand friction.
- **GEAR MOTOR:** Three-phase 400V motor asynchronous.
- **ELECTRICAL PANEL:** Consists of safety components, power and electrical board.



High-Speed Doors



OPERATION

The motorisation of this door consists of an efficient high-quality **three-phase asynchronous motor**. It also includes a worm gear reducer delivering maximum reliability. The motor brake allows the immediate stopping of the drum when it receives orders for either stop or inversion, or in the event of a sudden power failure.

In the event of power supply failure, the engine can be disengaged, and the handle can be used to open/close the door manually.

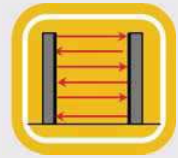
The door's **control panel** is composed by protection and manoeuvre elements delivering an easy and safe operation.



SAFETY SYSTEMS

The **PR10 high-speed door** has a **light curtain of safety sensor** as standard. Sensor are installed next to the lateral guides of the door, to order its instantaneous opening if they detect any obstacle during the manoeuvre. This light curtain also uses cross beams, in order to ensure maximum protection.

The **light curtain** has a safety certificate in accordance with regulations: EN ISO 13849-1:2008 Cat.2 PL D; EN 61508:2010 SIL 2; EN 12978:2009 (SB type, exl. IEC 61496-2:2006).



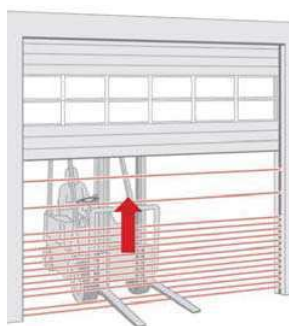
Light curtain (standard)



10 available colours



Light Curtain



Anti-collision safety system



Control panel

SERVICES

In addition to the standard technical specifications of the high-speed doors, other options are also available*:

Features	Standard	Optional
Light curtain	●	
Frequency shifter		○
Uninterruptible Power Supply (UPS)		○
Extra safety photocell		○
Extra opening options		○
Motor cover		○
Front motor		○
A row of small windows	●	
Second row of small windows		○
Additional push button panel		○
Middle stop		○

Standard feature ●
Optional feature ○

COLOUR RANGE

The colours available for the canvas are: white, cream, yellow, orange, red, light blue, dark blue, green, grey and black.

CANVAS:



The **Rolling High-speed Door (PR10)** has been designed and manufactured in accordance with the following European directives and standards:

UNE - EN 12453 and UNE-EN 13241

*For other options, consult Customer Service.

www.inkema.com

C/ Galileo, 2 – Naves 4 - 12 – Apartado de correos 132 – 08150 Parets del Vallés – Barcelona – (Spain)
For further information please contact us by phone +34 93 544 47 08 or by email: export@inkema.com

High-Speed Doors



Self-Repairable High-Speed Internal Door PR11

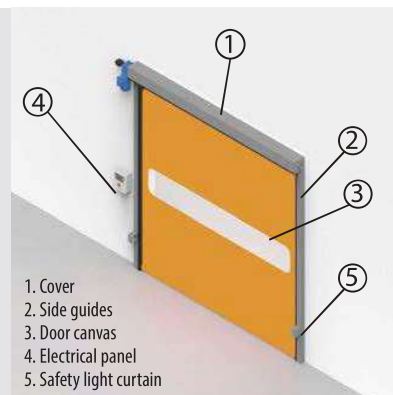
Motorised high-speed rolling door in galvanized steel structure for installation in indoor areas.

TECHNICAL DESCRIPTION

Inkema Self-repairable High-speed Internal Door is composed by a PVC canvas with internal reinforcements, attached to a metal frame which incorporates a motor-reducer driven by a control panel.

It has been designed for use in warehouses, logistics centres, premises and any type of production plant which processes a lot of goods.

Thanks to its **exclusive function of self-repairing**, when an element hits the door accidentally, the canvas leaves the guides without damaging any element. Then, the door automatically re-enters into its guide, acting normally. This fast-acting door is designed especially for heavy duty indoor applications. It facilitates a fluid traffic thanks to its high speed of opening and closing.



- ✓ **GUARANTEED AUTO-REPAIR:**
In case of accidental hit, the door repairs itself automatically.
- ✓ **MULTIFUNCTIONAL DOOR:**
Suitable for installations of any industrial sector: agri-food, pharmaceutical,...
- ✓ **MAXIMUM SAFETY ABOVE ALL:**
Its sensor curtain inverts instantly the door in the event of detecting any obstacle.
- ✓ **QUICK INSTALLATION AND EASY REPAIR:**
The door is delivered pre-installed. Low maintenance.

AUTO-REPARATION AND ROLL-UP SYSTEM

In the event of non-perfect rolling, the **PR11** system self-repairs it after repeating the manoeuvre, by guiding the canvas through the **lateral guides** until getting it back to correct position.

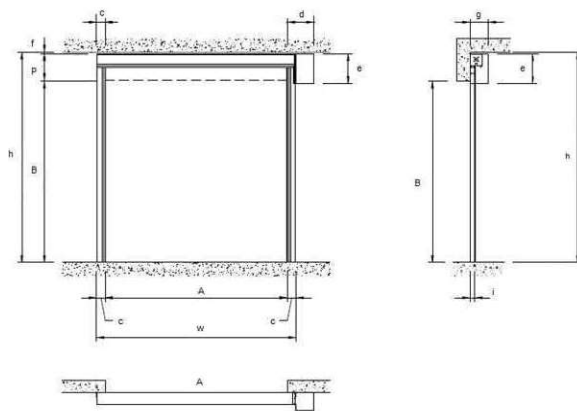


TECHNICAL DATA

- Use: Indoor
- Structure: Metallic frame
- Max. size: 4000 x 4000 mm.
- Colours (canvas-frame) 10 colours available (white, cream, yellow, orange, red, light blue, dark blue, green, grey, black).
- Material-canvas: High strength PVC (900g/m²)
- Max. Speed: Opening: (~1,0m/s)
Closing: (~1,0m/s)
- Safety: Photocell barrier
- Control panel: Frequency shifter (optional)
- Conformity: EN13241-1

*Faster speeds are possible upon request.

DIMENSIONS



	A	B	P	c	d	e	f	g	h min.	i	W min.
Min. (mm)	820	2000	450	115	455	527	30	328	2580	80	1050
Max. (mm)	4000	4000							4480		4230

(*) Valid dimensions for doors with right side engine 10PR10/11ABLD.A

COMPOSITION

This **high-speed rolling door** consists of the following elements:

- **CANVAS:** Made with flexible polyester inner mesh of great resistance and covered with PVC in 0.8mm thickness. Transversal reinforcements are placed to provide greater rigidity.
- **FRAME:** Composed by two laterals and head, all made in 2mm folded sheet.
- **HEAD:** It contains the pivot shaft designed to withstand friction.
- **GEAR MOTOR:** Three-phase 400V motor asynchronous.
- **ELECTRICAL PANEL:** Consists of safety components, power and electrical board.



High-Speed Doors



High-Speed Doors

OPERATION

The motorisation of this fast-acting door consists of an efficient high-quality **three-phase asynchronous motor**.

It also integrates a worm gear reducer delivering maximum reliability. The motor brake allows the immediate stopping of the drum when it receives orders for either stop or inversion, or in the event of a sudden power failure.

In the event of power supply failure, the engine can be disengaged, and the handle can be used to open / close the door manually.

The **door's control panel** is composed by protection and manoeuvre elements delivering an easy and safe operation.

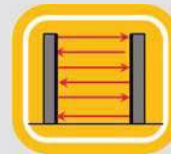


Gear motor attached to the frame

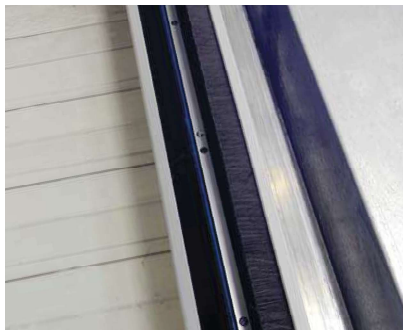
SAFETY SYSTEMS

The **PR11 Self-Repairable High-Speed Internal Door** has a **curtain of safety sensors** as standard safety system.

Sensors are installed next to the lateral guides of the door, to order its instantaneous opening if they detect any obstacle during the manoeuvre.



Photocell curtain



Safety Electric Edge



Control panel



PVC canvas with internal reinforcements

SERVICES

In addition to the standard technical specifications of the high-speed doors, other options are also available*:

Features	Standard	Optional
Light curtain	●	
Frequency shifter		○
Uninterruptible Power Supply (UPS)		○
Extra safety photocell		○
Stainless steel frame		○
Motor cover		○
Front motor		○
A row of small windows	●	
Second row of small windows		○
Additional push button panel		○
Middle stop		○

Standard feature ●
Optional feature ○

COLOUR RANGE

The colours available for the canvas are: white, cream, yellow, orange, red, light blue, dark blue, green, grey and black.

CANVAS:



The **Self-Repairable High-Speed Internal Door (PR11)** has been designed and manufactured in accordance with the following European directives and standards: UNE-EN :

UNE -EN 12453 and UNE-EN 13241

**For other options, consult Customer Service.*

www.inkema.com

C/ Galileo, 2 – Naves 4 - 12 – Apartado de correos 132 – 08150 Pareds del Vallés – Barcelona – (Spain)
For further information please contact us by phone +34 93 544 47 08 or by email: export@inkema.com



Aluminium High-Speed Rolling Door

PR12

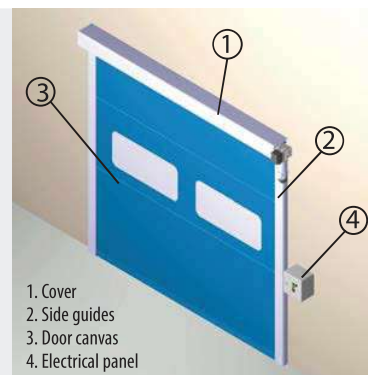
Motorised high-speed rolling door with an aluminium structure for installation in indoor areas.

TECHNICAL DESCRIPTION

The main feature of Inkema's PR12 high-speed rolling door is its structure made of **extruded anodised aluminium**, which makes it much **lighter and cleaner** than conventional high-speed doors.

It is suitable for installation in areas of high traffic, as they need doors that open and close quickly. It has been designed for use in warehouses and/or facilities in any industrial sector: logistics, agrifood, pharmaceuticals, automotive,...

The door consists of a PVC canvas made with high strength polyester that is rolled up in a drum, and attached to galvanised steel supports. The PR12 door's frame is made of high quality anodised aluminium, making this door ideal for humid environments.



- ✓ **QUALITY MATERIALS:**
The door is made of high quality aluminium and galvanised parts. These materials guarantee a long life.
- ✓ **EXCELLENT VALUE:**
The high quality performance offered by this door together with a very competitive price make this door a perfect choice.
- ✓ **FAST INSTALLATION WITH REPAIR SYSTEM:**
In the event of accident, it can get back to operation easily without the intervention of a technician.
- ✓ **OPTIMAL AESTHETIC FINISHES:**
The frame's anodised surface treatment makes this door exceptionally durable.

STRUCTURE

The structure of the new high-speed doors is composed by a simple set of **3 different anodized aluminium profiles**, which combined set up the complete frame.

This new door structure is **much lighter, practical and elegant** than the previous ones. But above all, it is **easier to install** and, in the event of malfunction, **to repair**. All the electric installation is hidden behind the frame.

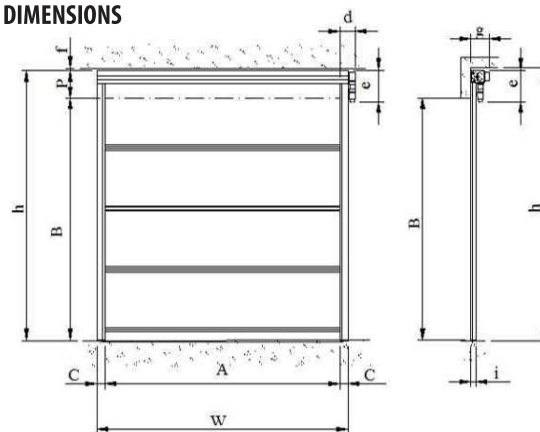


TECHNICAL DATA

- Use: Indoor
- Structure: Aluminium
- Maximum Size: 4000 x 4000 mm.
- Canvas Material: High strength PVC (900g/m²)
- Maximum Speed: Opening: (~1.0 m/s)
Closing: (~1.0 m/s)
- Power supply: 3 x 400 V
- Safety: Light curtain (standard)
- Control panel: Frequency shifter (optional)
- Compliance: EN13241-1

D: For side motor D = 290 mm. For front motor D = 0.
E: For side motor E = 545 mm. For front motor E = 745mm

DIMENSIONS



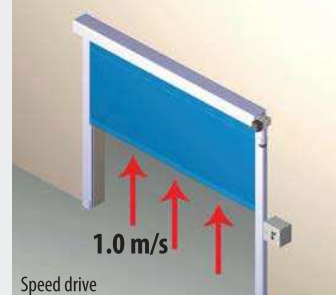
	A	B	P	c	d	e	f	g	h	i	w
Min. (mm)	825	2000	460	156	450	530	30	310	2490	115	1137
Max. (mm)	4000	4000	460	156	450	530	30	310	4490	115	4312

FAST, EASY AND SILENT OPERATION

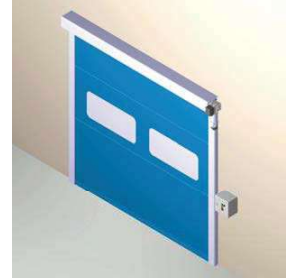
This door is specially conceived for indoor intensive use. It eases a **fluid traffic** thanks to its fast opening with low noise level, implying also energetic saving and bigger efficiency.

Depending on the door's dimensions, it **opens at 1.0 m/s with a variable speed drive** and closes at 1m/s.

The new Inkema's exclusive high-density polymers reduce canvas friction and therefore reduce the noise in raising and lowering the canvas.



High-Speed Doors

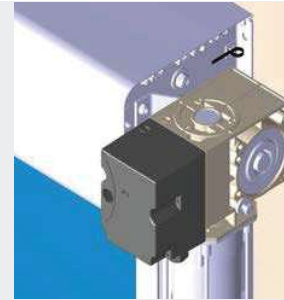


OPERATION

The door operates by the combination of a **geared motor up to 0.55kW** and an electric control panel with inverter. This system regulates the motor's speed when the canvas gets closer to the highest point and also to the lowest, reducing any vibration and giving a longer life to the set. The system provides a **faster opening / closing** when it rotates the canvas cylinder to open or to close the door.

If the power supply fails, the motor can be disengaged and the crank can be used to open and/or close the door.

Its **electrical panel** consists of protective components, power components and a frequency inverter (optional).



Motor encoder attached to frame

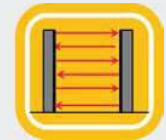


Control panel

SAFETY SYSTEMS

The **PR12 high-speed door** has a **light curtain with a polarised filter** as standard. It avoids collisions, in the event that any person or goods pass under the door while it is in operation. This light curtain also uses cross beams, in order to ensure maximum protection.

The **light curtain** has a safety certificate in accordance with regulations: EN ISO 13849-1:2008 Cat.2 PL D; EN 61508:2010 SIL 2; EN 12978:2009 (SB type, exl. IEC 61496-2:2006).



Safety curtain (standard)



Door's lateral



Safety curtain



Door's Motor



Anodised aluminium frame

High-Speed Doors

FEATURES

Further to the standard technical characteristics of the high-speed doors, Inkema offers others optional improvements:

Features	Standard	Optional
Light curtain	●	
Frequency shifter		○
Uninterruptible Power Supply (UPS)		○
Extra safety photocell		○
Extra opening options		○
Motor cover		○
Front motor		○
A row of small windows	●	
Second row of small windows		○
Additional push button panel		○
Middle stop		○

Standard feature ●
Optional feature ○

COLOUR RANGE

The available colours for the canvas are: white, cream, yellow, orange, red, light blue, dark blue, green, grey and black.

CANVAS:



The **High-Speed Aluminium Rolling Door (PR12)** has been calculated and designed pursuant to the following European directives:

UNE -EN 12453 and UNE-EN 13241

**For other options, consult Customer Service.*

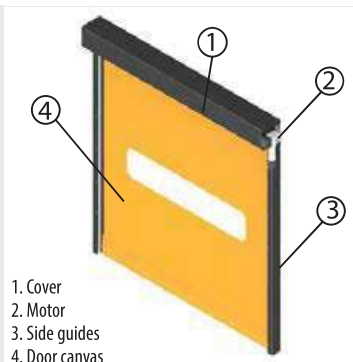
www.inkema.com

TECHNICAL DESCRIPTION

Inkema's Self-Repairable High-Speed Door has been designed for its use in warehouses, logistic centres, stores and any kind of productive plant with an intense traffic of goods, ensuring at all times a high level of airtightness.

The door is composed by a high resistance polyester fibre canvas coated with PVC, attached to a galvanized steel frame. It incorporates a motor with reducer driven by a control panel and a frequency converter that guarantees a smooth operation extending the useful life of the door.

The main feature is its **exclusive self-repair function**, which in the event of an accidental hit, enables the canvas to get out of its guides without damaging any component.



- ✓ **EXCELLENT AIRTIGHTNESS:**
Blocks air flows thanks to the double bevel in the frame's structure.
- ✓ **SELF-REPAIRING GUARANTEED:**
In the event of accidental hit, the door is automatically self-repaired.
- ✓ **MAXIMUM SAFETY ABOVE ALL:**
Two safety systems: sensor curtain and safety photocell.
- ✓ **WIND RESISTANCE:**
Wind resistance certificate obtained: Class 3 (wind speed up to 130 km/h)

ROLLING & SELF-REPAIRING

Thanks to the **new compensation profile** developed by Inkema, a correct winding of the canvas on the drum is guaranteed.

In the event of non-perfect rolling, the system self-repairs it after repeating the manoeuvre, by guiding the canvas through the **zip closure** since getting back to its correct position.



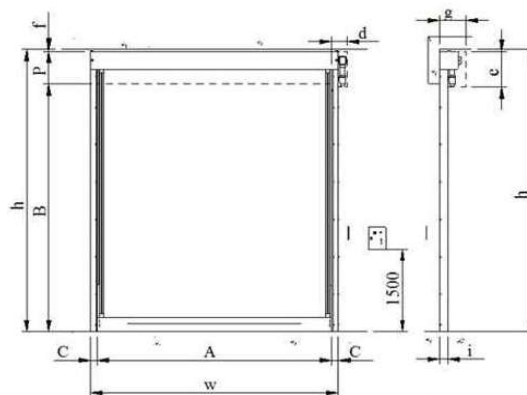
TECHNICAL DATA

- Use: Indoor and outdoor
- Structure: Galvanised steel
- Maximum size: 6000 x 6000 mm.
- Canvas colours: 5 available colours
- Frame colours: 10 available colours
- Canvas material: High strength PVC (1300g/m²)
- Maximum speed: Opening: (~1,6m/s)* Closing: (~1,0m/s)
- Wind resistance: Class 3: Up to 4000 x 4500 mm.
Class 2: From 4000 x 4500 mm.
- Safety: Photocell curtains.
Rolling photocells.
Frequency shifter
- Compliance: EN13241-1

*Higher speed is possible upon request.

D: For side motor D = 290 mm. For front motor D = 0.
E: For side motor E = 545 mm. For front motor E = 745mm

DIMENSIONS



	A	B	P	c	d	e	f	g	h	i	w
Min. (mm)	1400	2100	490	120	490	530	30	260	2600	145	1640
Max. (mm)	4000	4500	590	120	490	530	30	360	5100	145	4240

AIRTIGHTNESS LEVEL AND WIND RESISTANCE

This door is designed for indoor and outdoor intensive applications. It protects your environment from air currents, dust, pollution and humidity as well as increasing energy savings due to its high level of tightness.

The **canvas, totally flexible and light**, without rigid elements guarantees the security against possible accidental impacts.

In addition, this door has **a frame reinforced with tubes and a drum, both of steel**, that provide rigidity and resistance to the assembly for a long useful life.





OPERATION

The motorization of the door is formed by a **reducing motor of up to 1.1 kW fed to a single-phase voltage of 230 V** through a frequency inverter and a control panel. This system regulates the motor's speed when the canvas gets closer to the highest point and also to the lowest, reducing any vibration and giving a longer life to the set.

The motor with final encoder allows faster openings and closures when it rotates the canvas cylinder to open or to close the door.

In the event of blackout, it is possible to declutch the motor and use the handle to open or to close the door.



Gear motor attached to door's frame

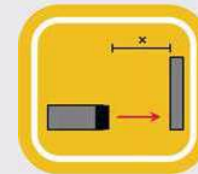


The control panel is installed beside the door

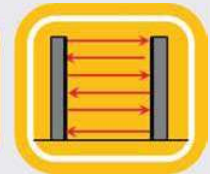
SAFETY SYSTEMS

The **High-Speed Door** has a double safety system: a **protection curtain** for people and elements that may interfere during its operation, and the **rolling photocells**, which are designed to detect any malfunction and ensure a perfect functioning.

The **protection curtains** act during the closing, stopping the door and opening it again when they detect a person or an object.



Rolling photocell



Safety curtain



Self-repair system in detail



Zip closure in detail



Front view



Sensor curtain and zip-bevel

SERVICES

In addition to the standard technical specifications of the high-speed doors, other options are also available*:

Features	Standard	Optional
Light curtain	●	
Frequency shifter	●	
Uninterruptible Power Supply (UPS)		○
Safety unrolling photocell	●	
Extra opening options		○
Motor cover		○
Front motor		○
A row of small windows	●	
Second row of small windows		○
Additional push button panel		○
Intermediate stop		○

Standard feature ●
Optional feature ○

COLOUR RANGE

The colours available for the frame and canvas are as follows:

FRAME:



CANVAS:



The **Self-Repairable High-Speed Door (PR13)** has been designed and manufactured in accordance with the following European directives and standards:

UNE -EN 12453 and UNE-EN 13241

* For other options, consult Customer Service.

www.inkema.com